

Titan Model 1000

| Demag Plastics Group | | Titan Model 1000 | | |
|--------------------------------|--|------------------|------|-------|
| Model Description | | 6400 | 9500 | 13600 |
| International Size Description | | | | |

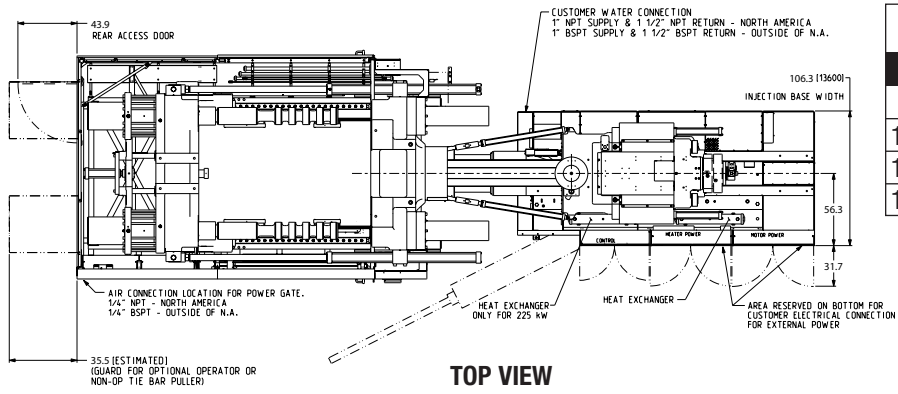
| Clamp Unit | | | | |
|---------------------------|------------------|----------|----------|-----------|
| Clamp Force | U.S. tons kN | | 1000 | 9000 |
| Open Force | U.S. tons kN | | 57 | 508 |
| Clamp Stroke - Max. | in. mm | | 74.8 | 1900 |
| Mold Thickness - Min. | in. mm | | 19.7 | 500 |
| Mold Thickness - Max. | in. mm | | 51.2 | 1300 |
| Open Daylight - Max. | in. mm | | 94.5 | 2400 |
| Platen Size | | | | |
| Horizontal | in. mm | | 68.9 | 1750 |
| Vertical | in. mm | | 60.6 | 1540 |
| Distance Between Tie Bars | | | | |
| Horizontal | in. mm | | 58.1 | 1475 |
| Vertical | in. mm | | 45.3 | 1150 |
| Ejector Stroke | in. mm | | 10.8 | 275 |
| Ejector Force | U.S. tons kN | | 17 | 149 |
| Clamp Speeds | | | | |
| Closing | in./sec. mm/sec. | 28.2 715 | 28.2 715 | 39.4 1000 |
| Opening | in./sec. mm/sec. | 26.2 665 | 26.2 665 | 39.4 1000 |

| Injection Unit | | 6400 | | | 9500 | | | 13600 | | |
|---|----------------------|-------------|-------------|-------------|-------------|-------------|-------------|-------------|-------------|--|
| Measure | | HiPr | Std. | HiVol | HiPr | Std. | HiVol | HiPr | Std. | |
| Screw Diameter | in. mm | 3.15 80 | 3.74 95 | 4.33 110 | 3.74 95 | 4.33 110 | 5.12 130 | 4.33 110 | 5.12 130 | |
| Screw L/D Ratio | | 24/1 | 20/1 | 20/1 | 23/1 | 20/1 | 20/1 | 20/1 | 20/1 | |
| Injection Capacity (GPPS) | oz. g | 78 2220 | 110 3131 | 148 4198 | 128 3626 | 171 4861 | 239 6789 | 187 5303 | 261 7406 | |
| Injection Capacity | cu. in. ccm | 146 2388 | 205 3367 | 275 4514 | 238 3899 | 319 5227 | 445 7300 | 348 5702 | 486 7964 | |
| Recovery Rate (GPPS) | oz./sec. g/sec | 3.1 89 | 4.6 131 | 6.3 180 | 3.0 86 | 4.2 118 | 6.2 175 | 4.2 120 | 6.2 177 | |
| Injection Pressure | psi bar | 34,672 2391 | 27,480 1895 | 20,496 1413 | 33,439 2306 | 26,326 1815 | 18,849 1300 | 34,673 2391 | 24,825 1712 | |
| Injection Rate (@ 1740 psi) (@120 bar) | cu. in./sec. ccm/sec | 33.3 546 | 47.0 770 | 63.0 1033 | 36.6 600 | 49.1 804 | 68.5 1123 | 55.9 917 | 78.1 1280 | |
| Injection Stroke | in. mm | | 18.7 475 | | | 21.7 550 | | 23.6 600 | | |
| Maximum Screw Speed | rpm | | 187 | | | 123 | | 124 | | |
| Back Pressure Adjust | psi bar | | 75-300 5-20 | | | 75-300 5-20 | | 75-300 5-20 | | |
| Barrel Heating Capacity | kW | 43 | 43 | 59 | 59 | 59 | 79 | 79 | 94 | |

| General Machine Specifications | | 6400 | | | 9500 | | | 13600 | | |
|-----------------------------------|------------|----------------|--|--|----------------|--|--|----------------|--|--|
| Measure | | | | | | | | | | |
| Oil Tank Capacity | gal. Liter | 343 1300 | | | 343 1300 | | | 661 2500 | | |
| Pump Motor | Hp kW | 147 110 | | | 147 110 | | | 221 165 | | |
| Pump Capacity (@100 psi) (@7 bar) | gpm LPM | 139 527 | | | 139 527 | | | 210 796 | | |
| Machine Weight (approx.) | lb. kg | 117,500 53,345 | | | 119,200 54,117 | | | 130,500 59,247 | | |
| Machine Dimensions | | | | | | | | | | |
| Length (approx.) | ft. m | 35.1 10.7 | | | 37.4 11.4 | | | 38.4 11.7 | | |
| Width (approx.) | ft. m | 11.8 3.6 | | | 11.8 3.6 | | | 11.8 3.6 | | |
| Height (approx.) | ft. m | 8.5 2.6 | | | 8.5 2.6 | | | 8.9 2.7 | | |

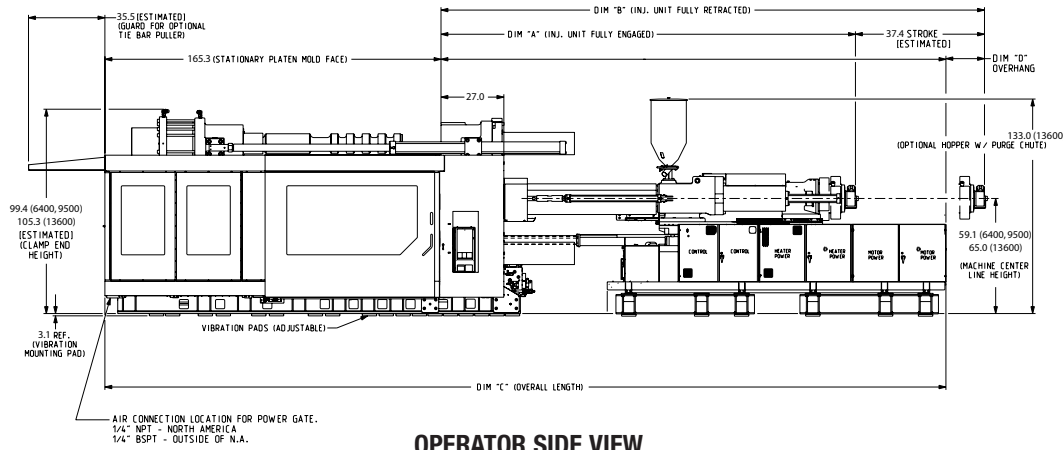
Performance specifications are based on theoretical data and mold, material and conditions. Since continuous improvement is the policy of Demag Plastics Group, we reserve the right to change specifications, designs and performance data without prior notice or obligation.

The specifications listed are standard. However, Demag Plastics Group will provide engineered options and solutions to meet virtually any performance requirements including high-speed configurations.

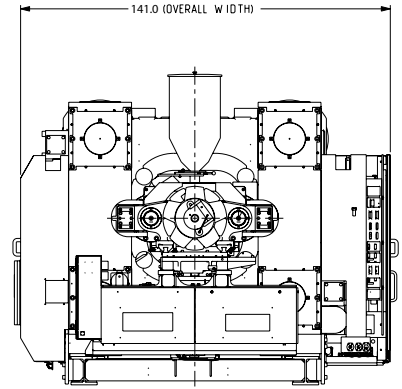


| Injection Unit | "A" (in.) | "B" (in.) | "C" (in.) | "D" (in.) |
|------------------------|-----------|-----------|-----------|-----------|
| STANDARD BARREL | | | | |
| 95mm 20:1 6400 | 279.3 | 316.7 | 417.8 | 0 |
| 110mm 20:1 9500 | 297.1 | 334.5 | 447.0 | 0 |
| 130mm 20:1 13600 | 223.5 | 260.9 | 457.2 | -28.4 |
| 130mm 25:1 13600 | 249.1 | 286.5 | 457.2 | -2.8 |

TOP VIEW

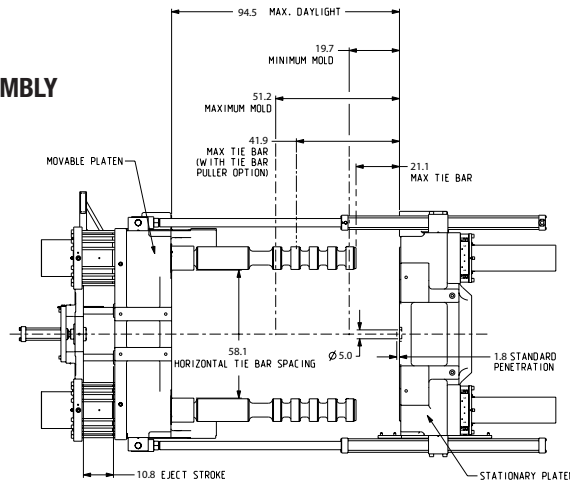


OPERATOR SIDE VIEW

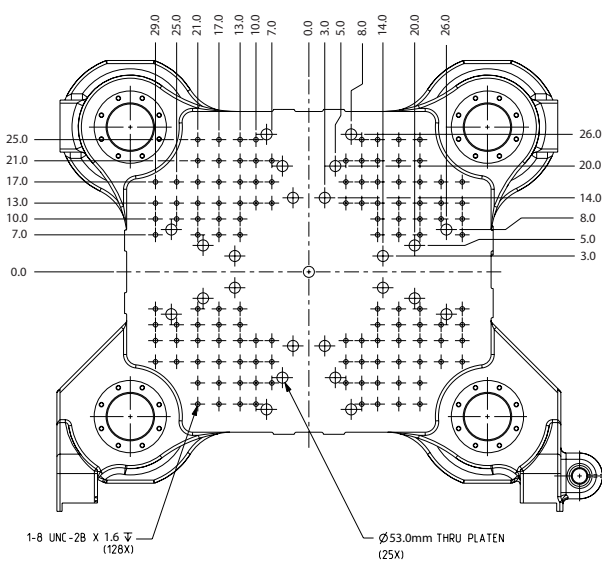


INJECTION END VIEW

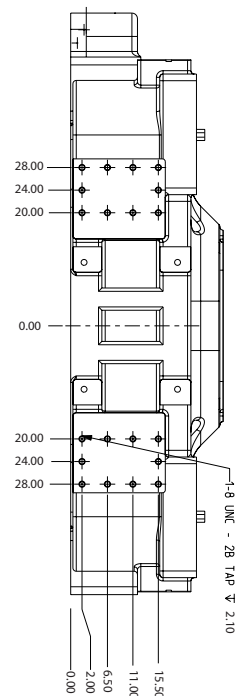
CLAMP ASSEMBLY



MOVABLE PLATEN*



ROBOT MOUNTING PATTERN*



* SPI Specifications. Refer to Appendix for Euromap specifications.