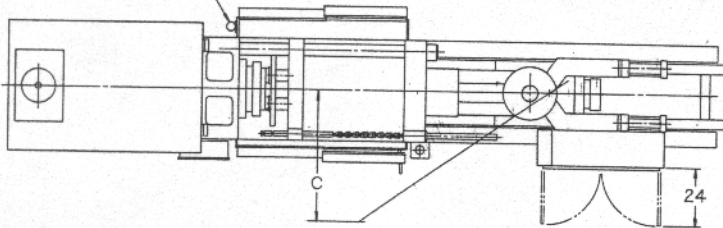


VAN DORN®

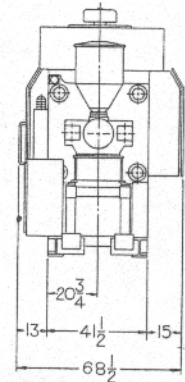
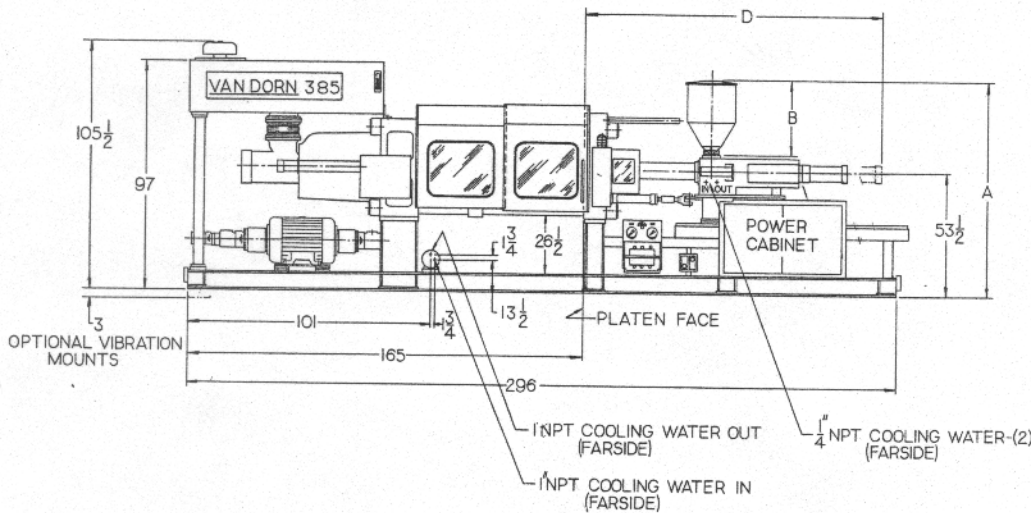
HP SERIES-HYDRAULIC CLAMP

385H-RS-20/30/60F

AIR CONNECTION
TO LUBRICATOR



MACHINE	A	B	C	STD. BARREL	VENTED BARREL
				D	D
385H-RS 20F	88½	30½	56	137	146
385H-RS 30F	89½	31½	60	140	176
385H-RS 35F	87¾	31½	60	143	181
385H-RS 60F	92½	33½	64	171	215
385H-RS 80F	97½	33½	65	187	237



Injection Unit

	385H RS 20F	385H RS 30F	385H RS 60F
Injection Capacity—Calculated (cu. in.)	37.6	55.3	115.5
Injection Capacity—G.P. Polystyrene (oz.)*	20	30	60
Recovery Rate G.P. Polystyrene (oz./sec.)†	2.0	2.75	2.55
Injection Pressure—Max. (p.s.i.)	20,000	20,000	20,000
Injection Rate—at 10,000 p.s.i. (cu. in./sec.)	38	39	37
Injection Stroke (in.)	9.5	10.75	14.31
Screw Diameter (in.)	2.24	2.56	3.15
Barrel L/D Ratio	20:1	20:1	20:1
Screw Speed Range (R.P.M.)	30-300	30-300††	20-175††
Back Pressure Adjustment (screw rotating—p.s.i.)	75-300	75-300	75-300

General Specifications

	1	1	1
Pump Motors	1	1	1
Total H.P. (hydraulic system)	75	75	75
System Pressure (Inject/Clamp p.s.i.)	2000/2500	2000/2500	2000/2500
Total Heating Wattage (KW)	13.9	13.9	18.3
Number of Heat Control Zones	4	4	4
Combined Pump Capacity (G.P.M. @ 100 p.s.i.)	111	111	111
Oil Capacity (Gal.)	330	330	330
Hopper Capacity (lb.)	85	145	225
Machine Weight (lb. approx.)	36,800	37,000	37,700

Clamping Unit

Clamp Force (tons)	385
Clamp Opening Force (tons)	17.7
Clamp Stroke—Max. (in.)	32
Open Daylight—Max. (in.) with Ejector Box (& spacers) removed	54
Mold Thickness—Min. (in.) Ejector Box (& spacers) installed	10
Ejector Box Thickness (in.)	12
Ram Spacer Thickness (in.)	—
Platen Size—Standard—H & V (in.)	41.5 x 41.5
Dist. between rods—Standard—HxV (in.)	28 X 28
Dist. between rods—Optional—HxV (in.)	—
Tie rod diameter (in.)	5
Clamp Speeds: (in./sec.)	
Closing Fast	30
Closing Slow (Adjustable)	4
Opening Fast	26
Opening Slow	1.6
Ejector Force (tons)	8.3
Ejector Stroke (in.)	6
Ejector Speed (in./sec.)	
Forward (adjustable)	9
Retract	15

Since continuous improvement is Van Dorn's policy, we reserve the right to change specifications, designs, and performance data without prior notice or obligation.

*Dependent upon mold, material and conditions.
†Average value based on S.P.I. test procedures.

††Higher torque motor available with lower R.P.M. and recovery rate.

